



Perforated Metal for Public Transport

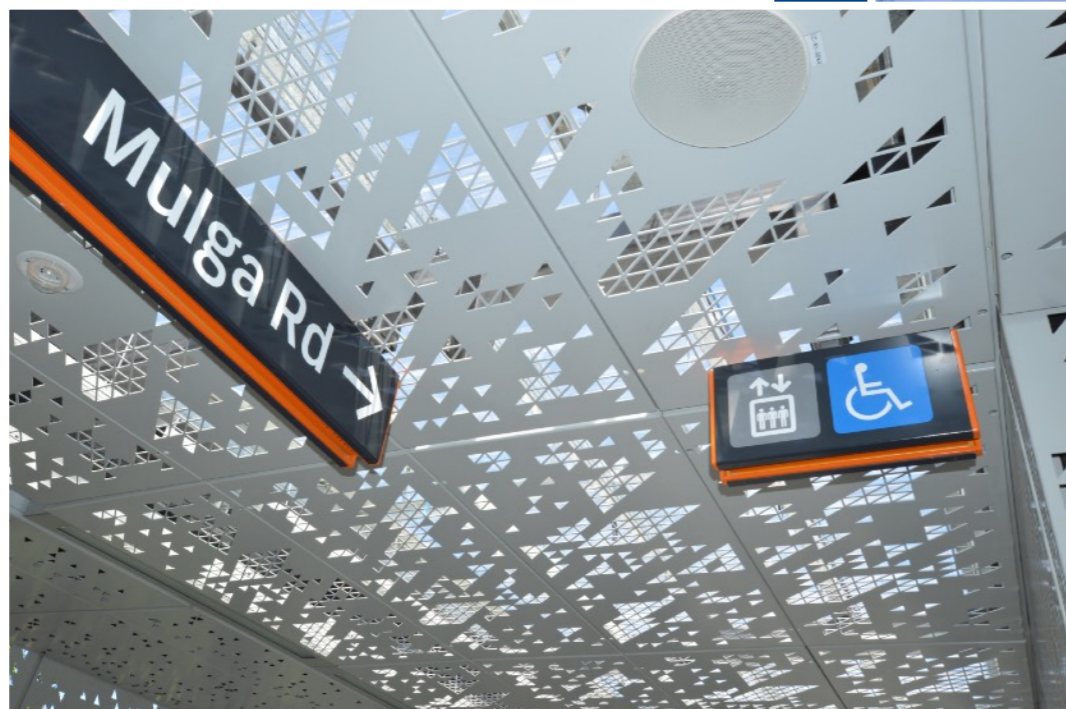


arrowmetal

Perforated Metal for **Public Transport Projects**

What do many newly opened and upgraded transport hubs have in common? In addition to improved accessibility and design, it's the use of materials like perforated metal.

As State and Federal Governments unveil huge spending on transport infrastructure over the next few years, we look at some of the reasons why architects and developers continue to favour perforated metal for public transport infrastructure projects, specification options, and how perforated metal is being used to great effect in the Australian public transport sector.



Why perforated metal for public transport infrastructure projects?

The key benefits:

Strength, weight, and durability

Perforated metal is one of the strongest yet lightest materials you can specify. Offering great structural strength without the heavy load, it's ideal for busy, high footfall transport walkways and bridges where passenger safety is paramount. It's also durable, with a range of finishes to ensure performance and longevity in the harshest outdoor environments.

Customisation and design creativity

Perforated metal's almost endless range of designs and customisation abilities makes it a first-class choice for architectural creativity and visual appeal. Opt for classic and timeless hole styles, modern geometrics, or CAD-drawn photograph-based designs. Add brand colours, metallics, or special finishes, to create a standout landmark.

Noise control

With thousands of daily passengers, managing noise at transport hubs can be a major challenge. But the holes in perforated metal can control sound flow, specified with acoustic material to successfully absorb, deflect, or scatter nuisance noise.

Building comfort

Perforated metal allows perfect control of airflow, privacy, and light. Holes can be specified and positioned to match solar movement, shade, and wind conditions of the building, keeping passengers cool whilst maximising privacy and creating a spectacular decorative and dappled light feature.

Sustainability

Did you know that perforated metal is one of the most environmentally friendly materials around? Not only is it recyclable, because of its ability to control heat and light, it's also a great building energy saver. Metal we perforate includes aluminium, stainless steel, mild steel, galvanneal, and brass.

Easy installation

Arrow Metal perforated metal panels are delivered precision cut for direct and fast installation on site. If your panels are part of a composite facade or image series, each is specially marked for mistake-free installation. If there's a need to redesign or upgrade in the future, the panels are cost-effective to replace.

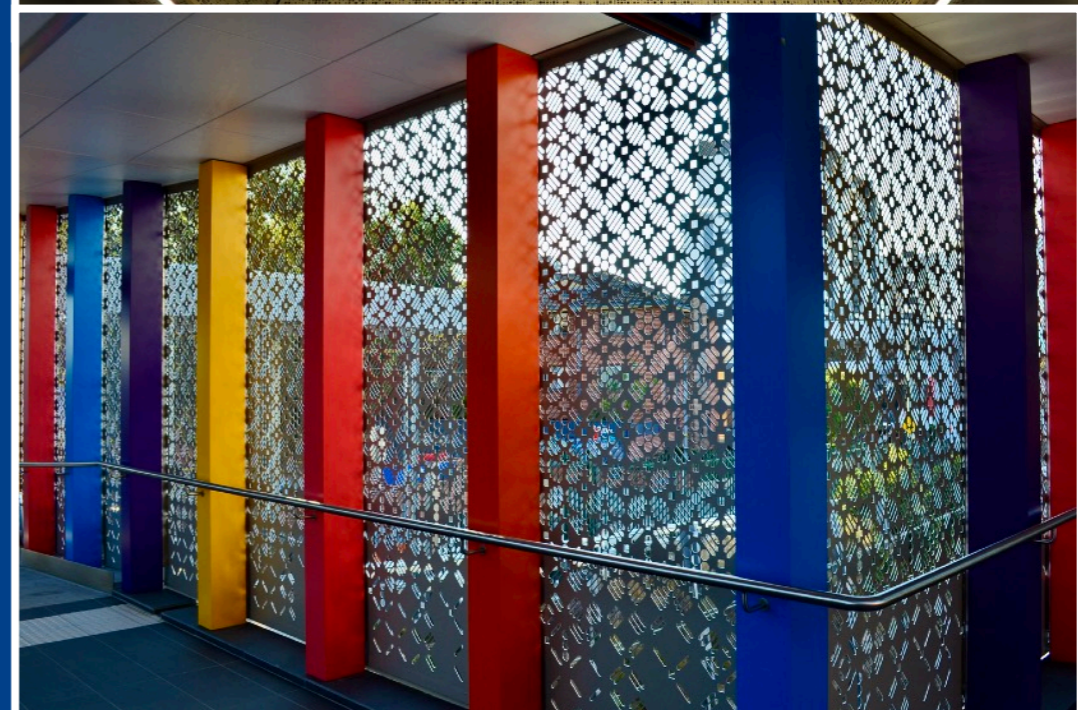
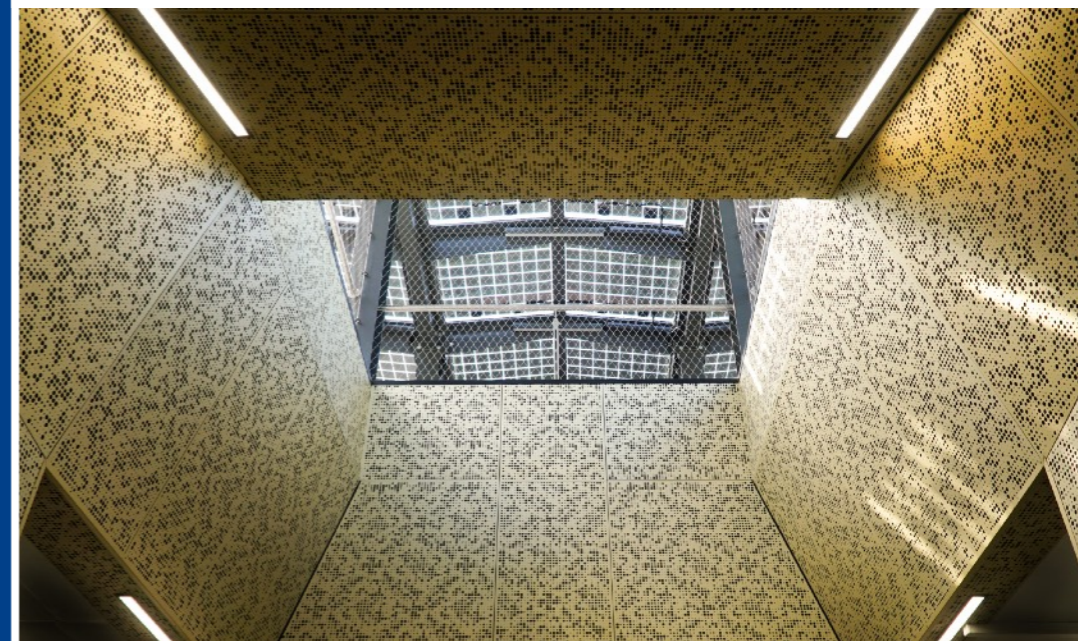
Time & budget efficiency

Cost control and minimising delays are key to successful project delivery. Whether you choose a standard pattern or a customised solution, panels are manufactured to meet your project budget and timescales.

How perforated metal is used for public transport infrastructure: **Case study gallery**

Architects and developers of these transport infrastructure projects have shown how innovative and considered perforated metal design can help to solve the challenges of passenger privacy, visual interest, weather conditions, accessibility, and safety, whilst adhering to any required planning and design principles.

Here are a few examples of Arrow Metal panel installations at train stations and transport hubs around NSW and QLD.



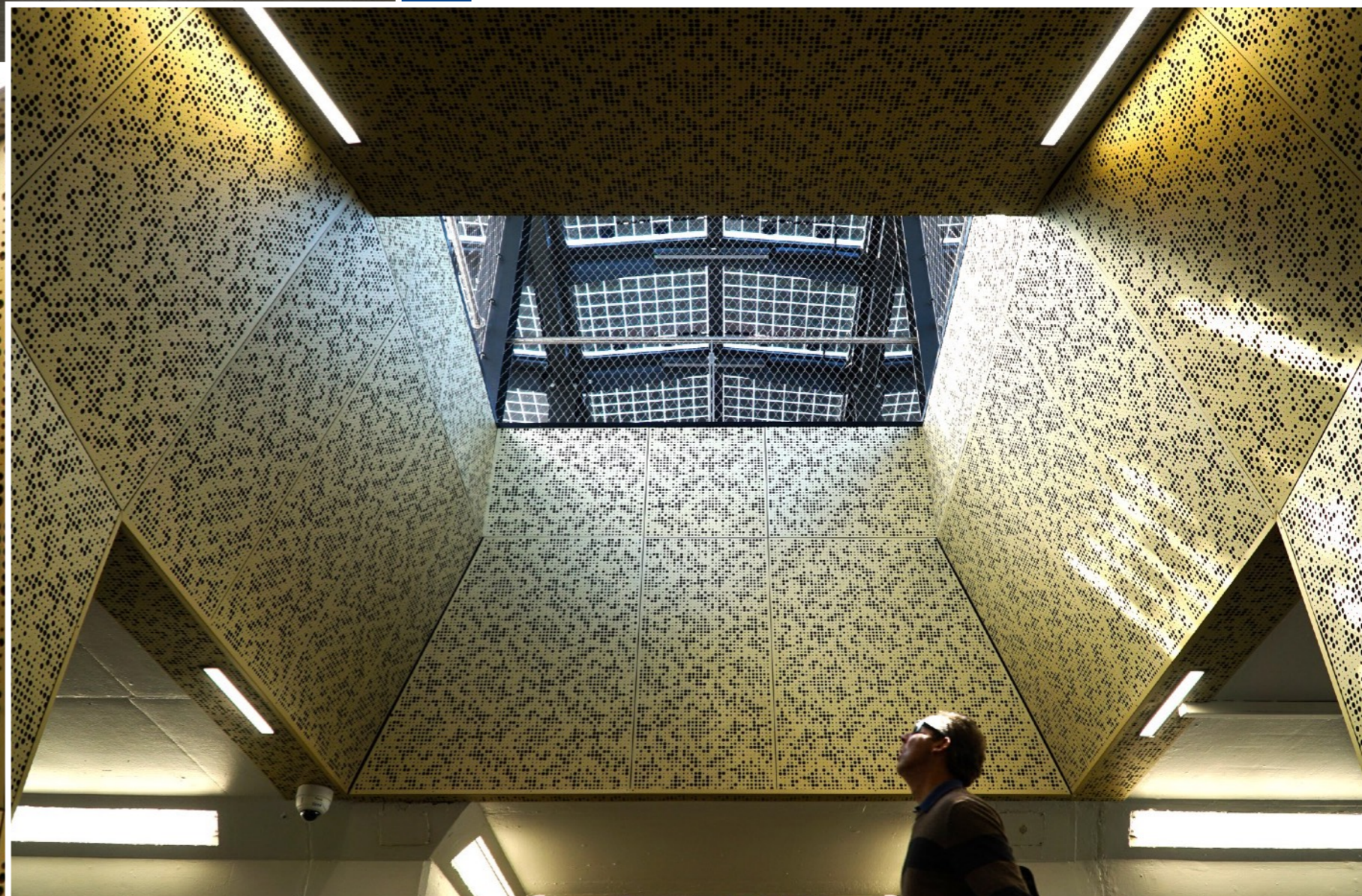


Como train station

Como train station's unforgettable Champagne Gold underpass is the toast of modern train travel. Perforated in our in-house, exclusive pattern 2319, the panels create an effervescent and vibrant travelling experience. Panels were also customised to include the station name, without compromising pattern flow.



[Click here to see the project...](#)



Oatley train station

Oatley train station's eye-catching perforated triangle walkway is on point for stylish and safe station design. The geometric shapes were designed with passenger comfort in mind, featuring large open perforations on the side walls for light and ventilation and small triangles on the roof for weather protection.



[Click here to see the project...](#)





Hazelbrook train station

Hazelbrook train station in the Blue Mountains takes tactile design to new heights. The multiple perforation styles and open areas of each custom-manufactured sheet elevate the walkway design, creating intrigue and visibility at eye level and passenger privacy at lower level.



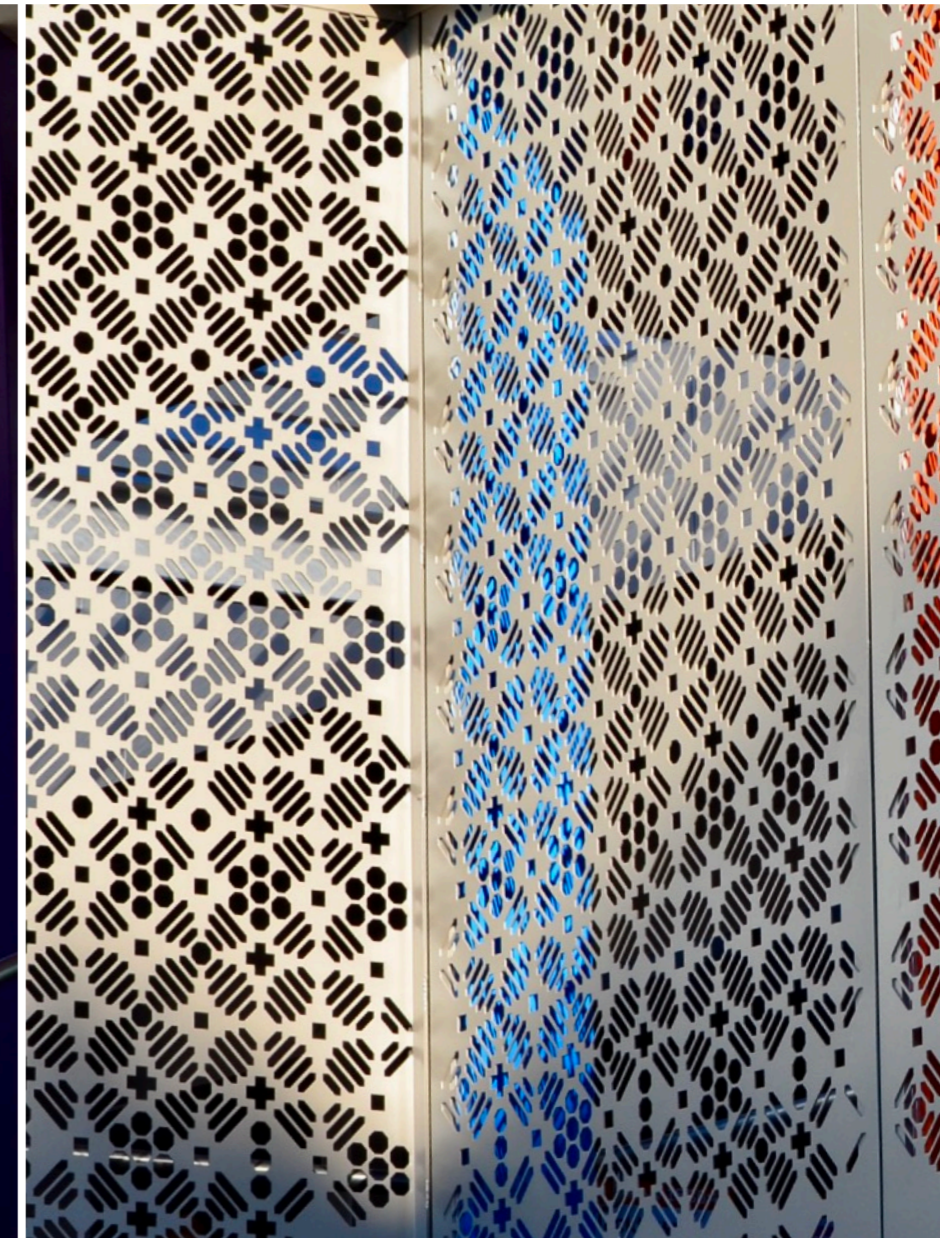
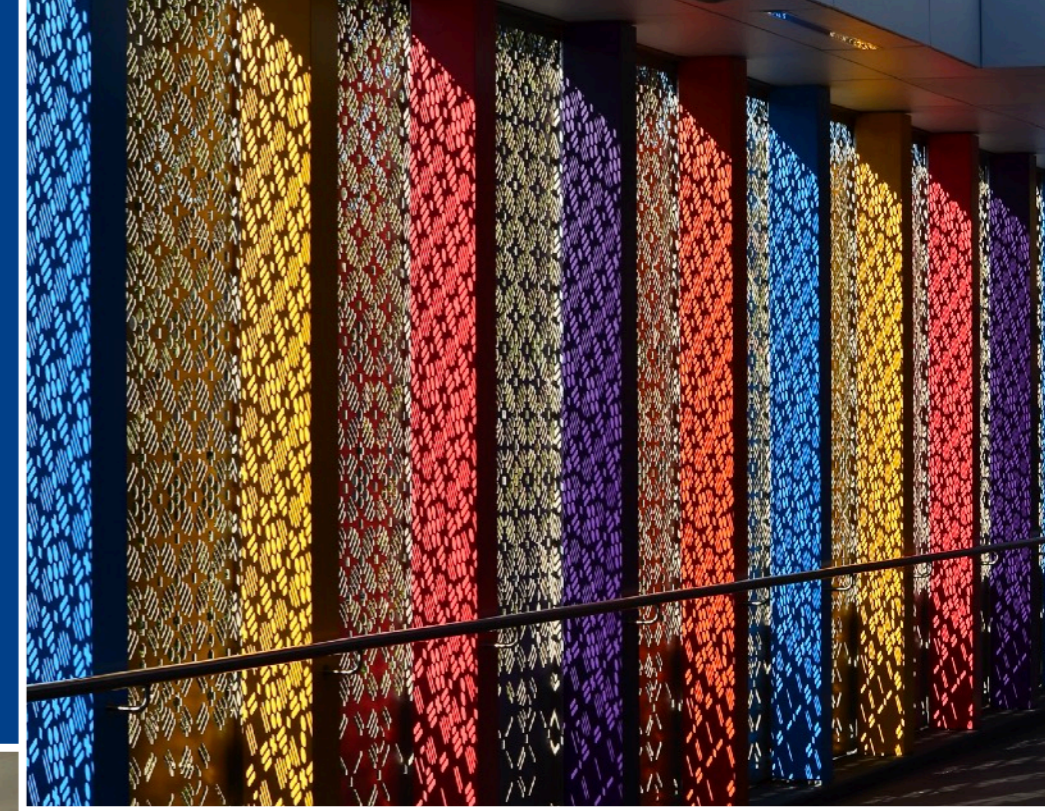
[Click here to see the project...](#)

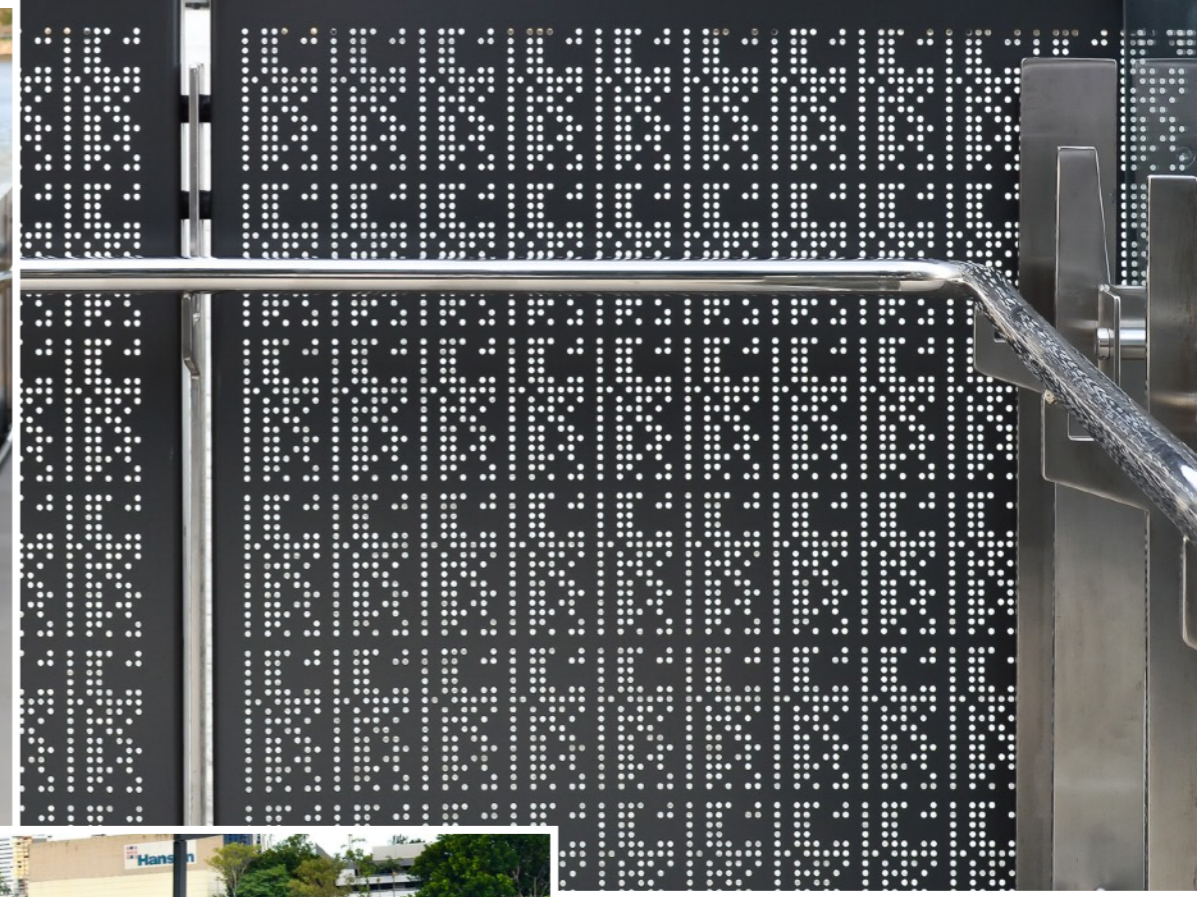
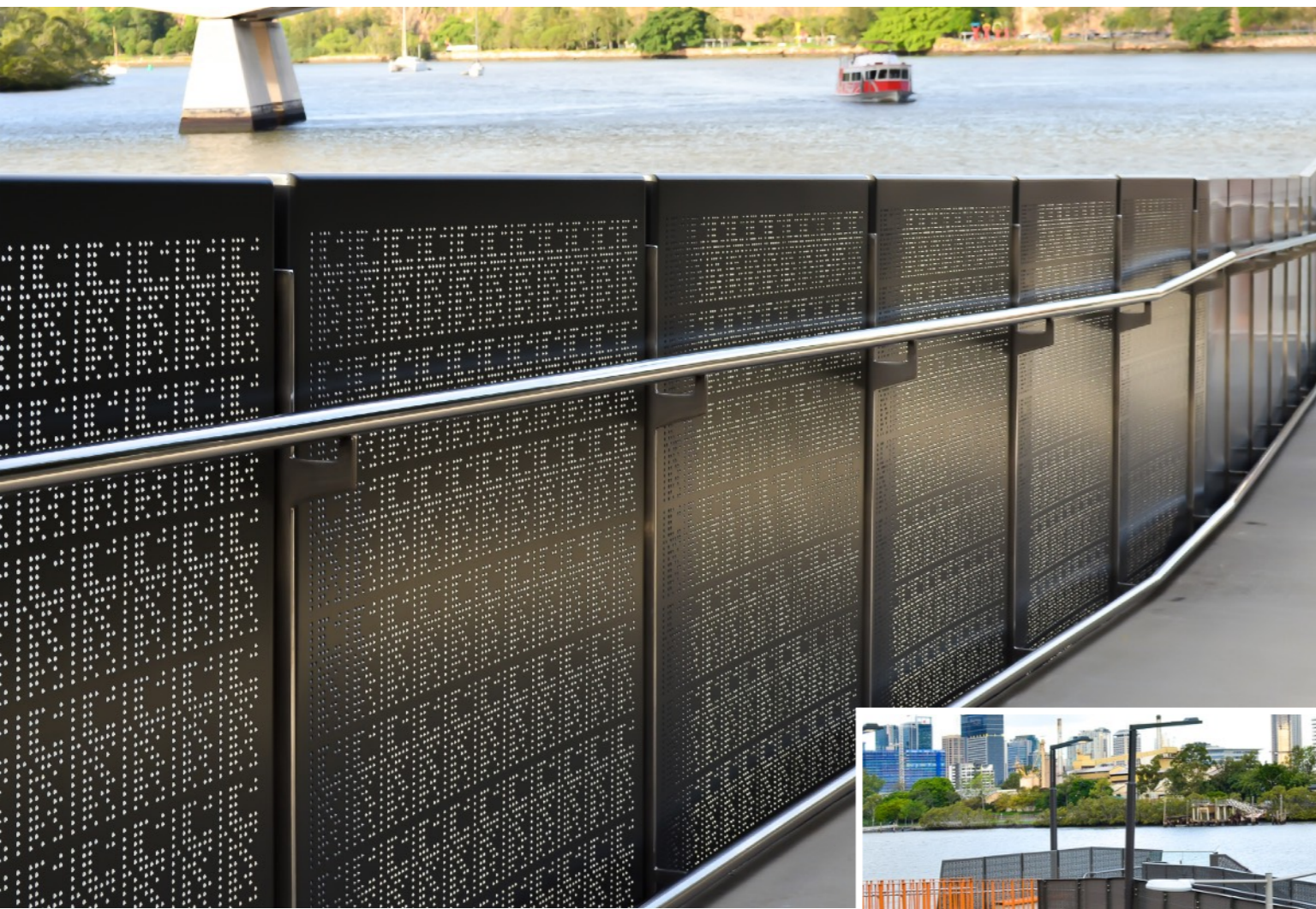
Harris Park train station footbridge

A pick n' mix of custom-tooled perforations, Harris Park's footbridge is steps ahead in modern train station design, perfectly complementing the brightly coloured pillars and creating beautiful light play.



[Click here to see the project...](#)





Brisbane ferry terminals

Marine locations and extreme weather go together. So the perforated panels for Brisbane's ferry terminal project are made from specially folded marine-grade powder-coated aluminium, resulting in smooth sailing for passenger accessibility and safety.



[Click here to see the project...](#)



Wynyard to Barangaroo walkway tunnel, Sydney CBD

A super-quick and safe way to get from Wynyard station to the waterside attractions of Barangaroo and Darling Harbour, the Wynyard to Barangaroo pedestrian tunnel flows perfectly in terms of transport design. The fluid, stream of light in the ceiling is surrounded by perforated panels, creating a stylish sense of movement and direction.

[→ Click here to see the project...](#)

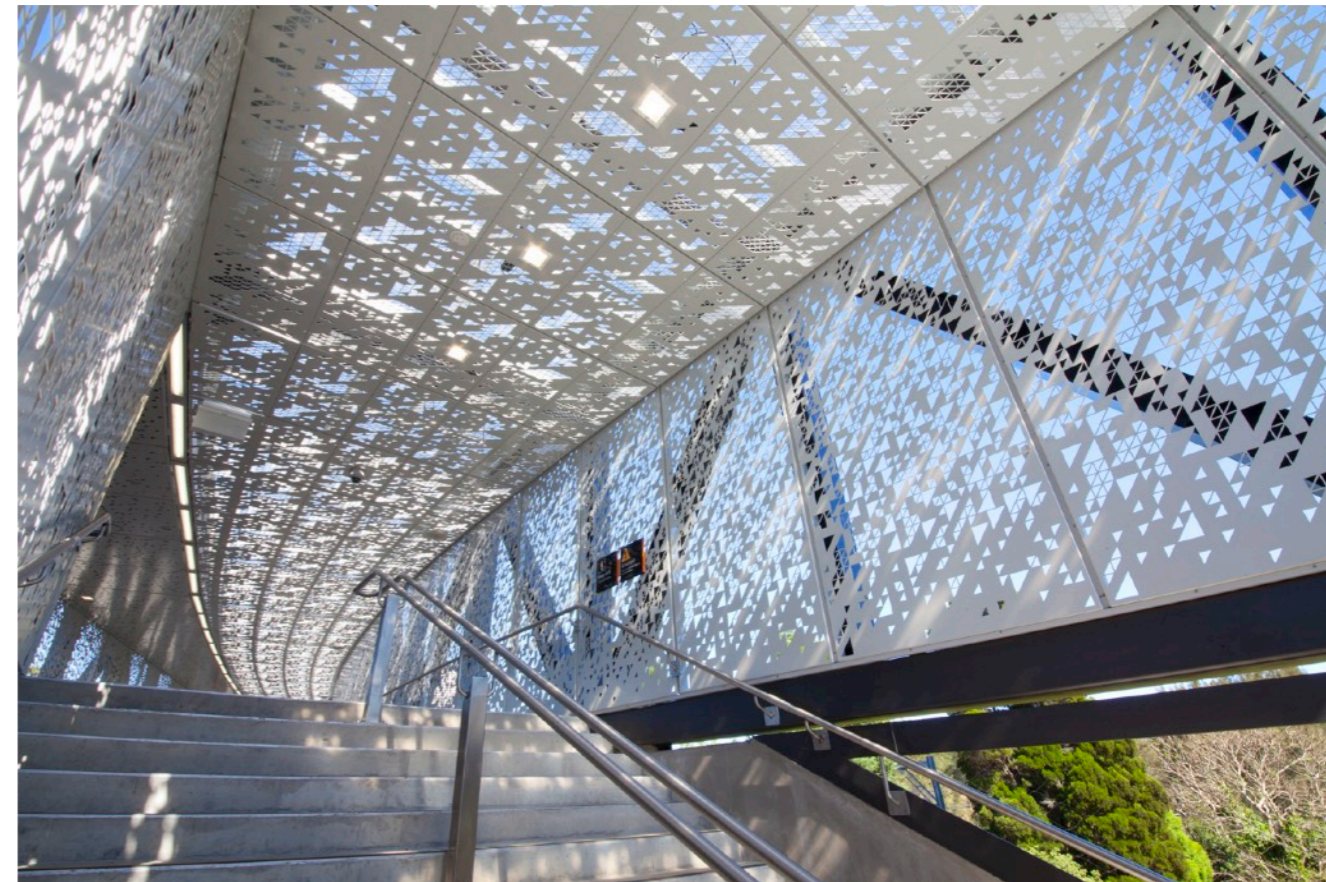


Perforated metal for public transport infrastructure projects: **Design, customisation, and finish options**

Arrow Metal perforated metal is available as:

In-stock panels: Available in a wide range of popular perforations, base metals, and thickness, in-stock panels are pre-manufactured and ready for dispatch, ideal for last-minute and urgent project needs where quick delivery is essential. Take a look at our collection [here](#).

Made-to-order: Our made-to-order collection features exclusive, on-trend patterns hand-drawn by our design team, including geometrics and futuristic shapes, as well as traditional perforation styles. Made-to-order patterns can be further customised in hole size and open area percentage to meet specific project needs. Take a look at our latest design release [here](#).



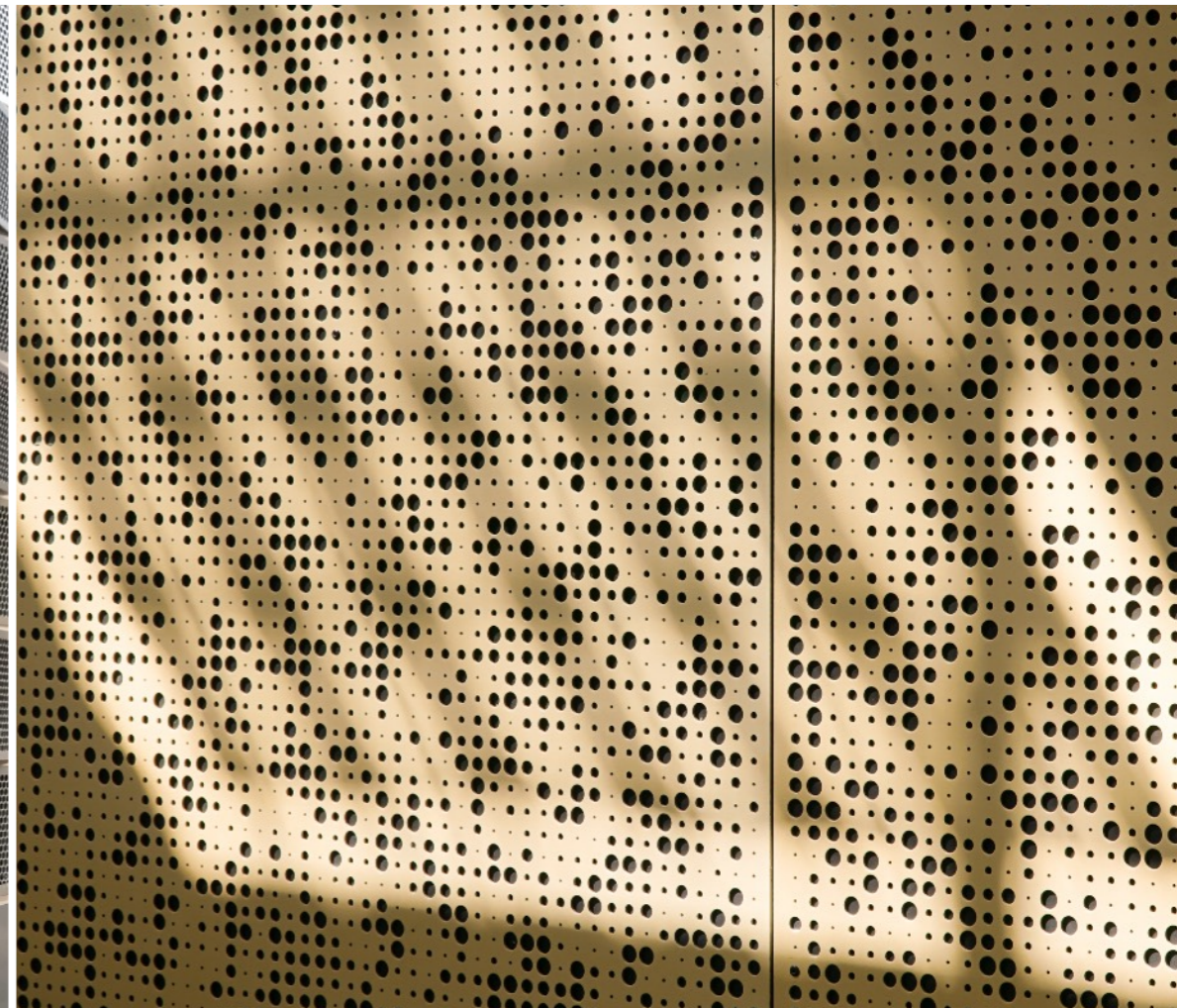
Bespoke designs: If you have your own design, we can bring it to life. We use advanced, software-controlled tooling machinery to recreate your CAD drawing in perforated metal, precision punched to the smallest detail. Bespoke perforated metal can be made from JPEG photographs, images, illustrations, text, logos, or any pattern you can create. Learn more [here](#).

Perforated metal for public transport infrastructure projects: **Design, customisation, and finish options**

After manufacture, we can apply a finish or perform special folding. Finishes are used to add colour, texture, or improve weather resistance, whilst curving enables the panels to match passenger walkway or staircase shape. Finish options include:

- Powder-coated colours
- Anodising (typically applied to aluminium)
- Weathered effects
- Metallic shades
- Folds and curves (design dependent)

 [Click here to learn more](#)



About Arrow Metal



Established in 1994, Arrow Metal is one of the most trusted specialist manufacturers and suppliers of perforated metal and woven wire mesh products in Australia.

Explore more perforated metal uses, ideas & inspiration

Browse our [Project gallery](#) for more ideas and discover our latest architectural perforated metal pattern releases [here](#), including exclusive customisable designs and geometric shapes. Or learn more about our custom perforated metal capabilities and solutions for your projects [here](#).

Call our team on **(02) 9748 2200** to discuss your requirements or send us an email enquiry to sales@arrowmetal.com.au



(02) 9748 2200



sales@arrowmetal.com.au

www.arrowmetal.com.au

www.arrowmetal.com.au

 [Visit our website](http://www.arrowmetal.com.au)

Whatever design you have in mind, we have the expertise and the technology to bring it to life.



arrowmetal